

WEBCAST AUCTION – (2) LOCATIONS, 1-DAY: GREENLEE TOOLS FEATURING LATE MODEL MAZAK CNC VMC & LASER, CIDAN CNC FOLDER (2016), AMADA PRESS BRAKE, NORDSON PAINT BOOTHS, OVENS, WASHERS, FUME & DUST COLLECTORS, GORBEL BRIDGE CRANES, LINCOLN WELDERS, DEMMLER WELD TABLES, DOALL HORIZONTAL BAND SAWS, SUNNEN HONE, TOOLROOM MACHINERY, PALLET RACK, MISC. SHOP & SUPPORT EQUIPMENT AND OFFICE FURNITURE

**BidSpotter.com**  
 See Instructions on Page 4  
 To Become a Qualified Bidder on the Internet

# WEBCAST AUCTION

Plant Closed

## GREENLEE TOOLS, INC.



**GREENLEE**

Location 1: 4601 E Indian Trail – Louisville, KY 40213  
 10 Miles South of Louisville

Location 2: 702 W. Main Street – Genoa, Illinois 60135  
 30 Miles Southeast of Rockford

**SALE DATE: THURSDAY, JULY 7TH, STARTING AT 10:00 AM EST**

INSPECTION: Wednesday, July 6th from 10:00 AM to 4:00 PM or by appointment with ryan@cia-auction.com



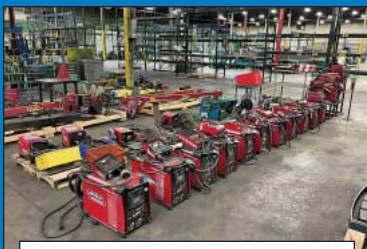
**NEW 2011**

4,400 Watt Mazak HyperGear-510 CNC CO2 Laser



**NEW 2016**

122" x 11 Ga. Cidan Futura Plus CNC Folder



(10+) Lincoln S350 Power Wave Welders with Feeders & Booms



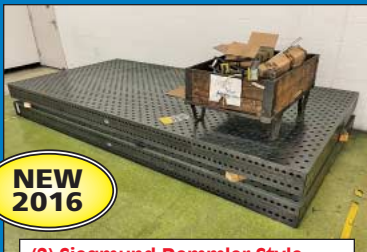
**NEW AS 2016**

(6) Fume & Dust Collectors by RoboVent, Torit & Vent Boss



**NEW 2014**

Mazak VCU 500 5X 5-Axis CNC Vertical Machining Center



**NEW 2016**

(2) Sigmund Demmler Style Welding Tables



78.8" x 80 Ton Amada Model RC-80S Press Brake



(2) Nordson XL-2002 Surecoat Electrostatic Powder Coating Paint Booths

**CINCINNATI INDUSTRIAL AUCTIONEERS**  
 auctioneers | appraisers | since 1961

Sale Under The Management Of  
**Cincinnati Industrial Auctioneers**  
 2020 Dunlap St., Cincinnati, Ohio 45214  
 Phone 513-241-9701 Fax 513-241-6760  
 cia-auction.com | info@cia-auction.com

**MTE**  
 MACHINE TOOL EMPORIUM, LLC

In Conjunction With  
**Machine Tool Emporium, LLC**  
 4850 Crittenden Drive, Suite D  
 Louisville, Kentucky 40209  
 502-802-4008  
 sales@machinetoolemporium.com  
 www.machinetoolemporium.com





# LOCATION 1: 4601 E INDIAN TRAIL - LOUISVILLE, KY 40213



4,400 Watt Mazak HyperGear-510 CNC C02 Laser

**NEW 2011**



122" x 11 Ga. Cidan Futura Plus CNC Folder

**NEW 2016**



Mazak VCU 500 5X 5-Axis CNC Vertical Machining Center

**NEW 2014**



78.8" x 80 Ton Amada Model RG-80S Press Brake



14" x 20" DoAll 500SNS Swivel Auto Horizontal Band Saw

**NEW 2012**



(10+) Lincoln S350 Power Wave Welders with Feeders & Booms



(2) Sigmund Demmler Style Welding Tables

**NEW 2016**

**NEVER USED**

## LOUISVILLE, KY:

### CNC VERTICAL MACHINING CENTER

Mazak VCU 500 5X 5-Axis CNC Vertical Machining Center; S/N 255571, 21" X-Axis Travel, 19" Y-Axis Travel, 20" Z-Axis Travel, 25HP, 12,000 RPM, 30 ATC, 40 Taper Toolholder, Equipped with Renishaw Probe, Chip Conveyor, Mazatrol Matrix 2 CNC Control, 2,522 Cutting HRS (New 2014)

### CNC LASER

4,400 Watt Mazak HyperGear-510 CNC C02 Laser; S/N 229782 (11/2011) 120" x 60" x 1" Max Workpiece Size, 2,050 LB/FT Max Load Capacity; 120.9" X Axis Stroke, 60.8" Y Axis Stroke, 3.5" Z Axis Stroke, Mazatrol PreView Control with Panasonic YB-L440A8M2E C02 Laser Oscillator; S/N G8109 (2011) 4,400 W Rated Output, 160L/Min Water Flow Rate, 50k HRS, SMC Model IDF3E-20-X133 Air Dryer; S/N PQ 0061S, Orion Model RKL-15000D-A3 Unit Cooler; S/N 604001, 40.5kW Capacity

### CNC FOLDER

122" x 11 Ga. Cidan Futura Plus CNC Folder; S/N 60581-10 with Large Qty. Tooling (New 2016)

### PRESS BRAKE

78.8" x 80 Ton Amada Model RG-80S Press Brake; S/N 806040 with Link Lite Blackmax (1984)

### PAINT BOOTHS & RELATED

54" x 70" Nordson XL-2002 Surecoat Electrostatic Powder Coating Paint Booth; S/N E-000867853 (2006) with Nordson Model 2002S Excel 2000, S/N 4023540, 10,800

CFM Min. Air Flow (NO CONTROLLER NOR GUNS)

48" x 70" Nordson XL-2002 Surecoat Electrostatic Powder Coating Paint Booth; S/N E-000091989 (2000) (NO CONTROLLER NOR GUNS)

Nordson Manual Touch Up Booth; (2000) with 5 Manual Guns

Nordson Scanner

### CRANE SYSTEMS & RELATED

3 Ton Uesco Bridge Crane; S/N 17-4313 with Hoist

Gorbel Bridge Crane - 16'x40'

Gorbel Bridge Crane - 28'x52'

Gorbel Bridge Crane - 25'x50'

Gorbel Bridge Crane - 34'x65'

500 LB x 9' Gorbel Jib Crane

6,000 LB A-Frame Gantry Crane; with 1/2 Dayton Chain Hoist

800 LB ANVER VPF-57-AC-L & L80M8-110-4/44 Vacuum Lifter; S0210010235, 270 LB Unit Weight, Generator: VPF-57-AC-MAIN (71001145), 115V/1PH/60Hz/7AMPS (New 2021 - Never Used)

5 Ton Caldwell Sheet Lifter

### FUME & DUST COLLECTORS

RoboVent Model MDC-4-1836

Series Plaser 3 Dust Collector; S/N 25693, 7.5HP, 11 AMP, 3PH, 480V, 5KA SCCR (New 2016)

(2) Vent Boss Model S620 Clean Air Makeup Units; S/Ns 23887 & 24043 5 HP, 3PH, 480V, 7.6 AMP, 5KA SCCR (New 2014)

Vent Boss Model S610 Clean Air

Makeup Unit; S/N 23518 5 HP, 3PH, 480V, 7.6 AMP, 5KA SCCR (New 2014)

Donaldson Torit Model DFO3-18

Dust Collector; S/N 2103782-1

Donaldson Torit Model DFO3-12

Dust Collector; S/N 2104003-1

### WELDING & RELATED

(13) Lincoln S350 Power Wave Welders with Power Feed 10M Wire Feeders

Miller XMT 304 Series Arc Welder

(10) Various Booms with Wire Feeders

(2) Sigmund Demmler Style

Welding Tables; 8' H x 79" W x 157" L (New 2016)

### BAND SAW

14" x 20" DoAll 500SNS Swivel Auto Horizontal Band Saw; S/N 592-12151 (New 2012)

### SHOP & SUPPORT EQUIPMENT

(70) Sections of Misc. Size Adjustable Beam Pallet Rack with Spare Beams

Thermco 6105CA30X1100 Gas

Mixer; S/N 24861, Mixture 0-30% Carbon Dioxide in Argon, 0-2,000 SCFH Capacity, 10-50 PSIG Outlet Pressure

(10+) Electric Lift Tables by Southwood

(5) Drills Presses by Dayton, Huvena, Westward

7.5 HP Ingersoll Rand Model 2475

Tank Mounted Air Compressor; S/N 9010229, 80 Gallon Tank

Large Quantity of Shop & Support

Equipment: (5+) Pallets of Misc. Hand Tools, Carts, Roller Conveyor, DE Grinder,



(6) Fume & Dust Collectors by RoboVent, Torit & Vent Boss

**NEW 2016**



(2) Nordson XL-2002 Surecoat Electrostatic Powder coating Paint Booths





**Kardex Titan Vertical Storage System**



**Binks BWN-68-7G Natural Gas Oven**



**PMW Model 612 HD Parts Washer**



**(5) Torit Dust Collectors**

Belt Sander, Notcher, Arbor Press, Hydraulic Press, Yellow hinge Racks, 1818 Conduit Bender, Weld Curtains, Barrel Pumps, Hydraulic Pumps, Sump Pumps, Hydraulic Lift Tables, Air Hose Reels, Green Roll Around Baskets, Shop Vacs, Mop Buckets, Floor Fans, Wall Fans, Trash Cans, Electric Motors, Metal & Wire Shelving, Lock Pocket Baskets, Lid Carts, Weld Carts, Plastic Push Carts, Blue Wooden Crate Stands, Green Engineering Work Kiosks, Roll Around Tool Cabinets, (2) Granite Tables, Air & Electric Hoists, Stack Bins, Work Benches, Miscellaneous Maintenance Supplies, 5,000 LB Floor Scale, Pallet Jacks, Strapping Kits, 16 Ton Roller Skate Kit, Bishamon Skidlifts, Guardrail

### OFFICE & RELATED

**Misc. Office and Cafeteria Furniture:** Office Desks and Chairs, Lunch Room Tables, Lunch Room Chairs, Office Cubicles, Conference Table with Chairs, Refrigerators, Microwaves, Manitowoc Ice Machine, File Cabinets, White Boards

**Jib Crane;** with 1/2 Ton Harrington Electric Chain Hoist

**250 LB Gorbelt Jib Crane**

### STORAGE SYSTEM

**Kardex Titan Vertical Storage System;** S/N 80086

### OVEN, WASHER, PAINT & RELATED

**Binks BWN-68-7G Natural Gas Oven;** S/N 028209003, 500° Max Temp, 350,000 BTU, 460V, 3PH, 60HZ, 1-15 PSIG

**PMW Model 612 HD Parts Washer;** S/N XR1210, 36" Dia. Turntable, 42" Working Height, 1,000 LB Turntable Load, 120 Gallon Wash Tank, 7.5 HP Motor, 460 V, 3PH, 60 HZ, 34 AMPS (2004)

**(2) 48" x 48" Powder Paint Booths**

**(3) Wagner EPG-2007 Powder Paint Machines**

### FUME & DUST COLLECTORS

**(2) Torit Model DFT3-12 Dust Collectors;** S/N IG459998-001 & N/A, 20 HP, 3450 RPM

**Torit Donaldson Model DF3DF6 Dust Collector;** S/N IG334667-001, 10 HP

**(2) Torit Dust Collectors V1200;** S/N 267128 & N/A

**(3) EZ Arm Extraction System**

### TOOLROOM MACHINERY

**9" x 16" DoAll Model C-916SA Swivel Automatic Horizontal Band Saw;** S/N 533-97155, 170" Saw Blade Length, 480V, 3PH, 60HZ

**Sunnen MBC-1804 Horizontal Honing Machine;** S/N 87593

**Parlec Series 1000 Tool Presetter TMM;** S/N W/550-079

**Electro Arc Tap Burner;** S/N 9333

**J&L Epic 20 Optical Comparator;** S/N 522272

**Tsudakoma RNA-251R.B Rotary Table/Indexer;** S/N 141394

### SHOP & SUPPORT EQUIPMENT

**(16) Section Of Misc. Size Adjustable Beam Pallet Rack**

**1,040 Gal Air Storage Tank**

**Bostitch FC95ECARM Box Stapler;** S/N M-10910

**Keyence XM-1000 Handheld CMM**

**Koolant Coolers WHI-1001-M Chiller;** S/N W302325-001, 1.2HP Compressor, 1.5HP Pump, 0.28KW Fan, 230V (New 2021)

**Misc. Support Equipment:** Work Benches, Shop floor chairs, Snow Blowers, Carts, Cabinets, Tables, File Cabinets, Lockers, Computer Stands, Shelving units, Bar stock rack, Wall Fans, Whiteboards, Pegboards, Foam, Skid Risers, Etc.

### OFFICE & RELATED

**Misc. Office & Break Room Items:** Office Desks and Tables with Chairs, Cubicle, Conference Room Tables, Nurse's Beds, File Cabinets, Shelving, Mini Refrigerator, Cabinets, Lockers, Tables, Sofa Chairs, Scale, Bench, Tables, Folding Tables, Chairs, Microwaves, Refrigerators, Shelving, Cabinets, Projectors, Projector Screens, Ice Maker, BluRay Player, Microphone Sound System, Etc.



**9' x 16" DoAll Model C-916SA Swivel Auto Horizontal Band Saw**



**Large Quantity Adjustable Beam Pallet Rack**



**(4) Gorbelt Free Standing Bridge Crane Systems**



**Late Model Office Furniture, Cubicles & Break Room**



**Parlec Series 1000 Tool Presetter TMM**



**J&L Epic 20 Optical Compactor**



**Sunnen MBC-1804 Horizontal Honing Machine**

## GENOA, IL:

### CRANE SYSTEMS & RELATED

**(4) Free Standing Gorbelt Bridge Crane Systems;** See Auction Catalog for Sizing

**500 LB Ceiling Mounted Gorbelt Bridge Crane;** with 400 LB Harrington Electric Hoist

**1,000 LB Column Mounted Gorbelt**

# WEBCAST AUCTION

**Plant Closed**  
**GREENLEE TOOLS, INC.**

**LOCATION 1:**  
4601 E Indian Trail – Louisville, KY 40213  
10 Miles South of Louisville

**LOCATION 2:**  
702 W. Main Street – Genoa, Illinois 60135  
30 Miles Southeast of Rockford

**SALE DATE:**  
**Thursday, July 7th**  
Starting at 10:00 AM EST

**INSPECTION:**  
Wednesday, July 6th from 10:00 AM to 4:00 PM or  
by appointment with ryan@cia-auction.com



**CINCINNATI INDUSTRIAL AUCTIONEERS**

auctioneers | appraisers | since 1961

Contact Information  
2020 Dunlap St.  
Cincinnati, Ohio 45214  
Phone 513-241-9701  
Fax 513-241-6760  
www.cia-auction.com



CNC Mazak Laser



(2016) Cidan Folder



(10+) Welders



(2) Paint Booths

**FIRST CLASS MAIL!**

PRE-SORT  
FIRST CLASS  
U.S. POSTAGE  
**PAID**  
CINCINNATI, OHIO  
PERMIT NO. 3593

**Important Mail**

TO BE DIRECTED TO THE ATTENTION  
OF EXECUTIVE PERSONNEL



**THURSDAY, JULY 7TH**

# WEBCAST AUCTION

**Plant Closed**  
**GREENLEE TOOLS, INC.**

4601 E Indian Trail – Louisville, KY 40213  
10 Miles South of Louisville

702 W. Main Street – Genoa, Illinois 60135  
30 Miles Southeast of Rockford

## IMPORTANT NOTICE:

Although information has been obtained from sources deemed reliable, the auctioneer makes no warranty or guarantee, expressed or implied, as to the accuracy of the information herein contained. It is for this reason that buyers should avail themselves of the opportunity to make inspection prior to the sale. This brochure is intended to provide general information of the equipment being offered and is subject to errors, omissions, additions or deletions. Please check with the Auctioneer's Office for a final listing. Items offered may or may not necessarily be sold as described and/or photographed in this brochure.

## BIDDER INSTRUCTIONS

> All bidders must register for this auction at [www.bidspotter.com](http://www.bidspotter.com). Please register 24-hours in advance to get through approval process.

**BidSpotter.com**

## KY & IL AUCTIONEERS

Jeffrey L. Luggen – KY License No. RP 7066  
Joseph M. Luggen – KY License No. RP 3521

Jeffrey L. Luggen – IL License No. 441.000380  
Joseph M. Luggen – IL License No. 441.002228



## TERMS OF SALE

All equipment described herein will be sold "as is", "where is" to the highest bidder or bidders for cash in accordance with our regular terms and conditions of sale. Unless other satisfactory arrangements are made, a **25% deposit** in cash, certified or cashier's check payable to Cincinnati Industrial Auctioneers, Inc., **is required on all purchases.** Firm and personal checks accepted only if accompanied by a letter from your bank guaranteeing your funds. All sales are subject to state and/or local taxes unless a signed exemption form is presented at the time of purchase. **All balances are due at the conclusion of the sale.** No merchandise may be removed while the sale is in progress. **All bidders must comply with our Standard Terms of Sale,** copies of which will be available at the sale site or can be obtained from our website.

**18% BUYERS PREMIUM IN EFFECT FOR ALL PURCHASES**



**CINCINNATI INDUSTRIAL AUCTIONEERS**

auctioneers | appraisers | since 1961

Sale Under The Management Of  
**Cincinnati Industrial Auctioneers**  
2020 Dunlap St., Cincinnati, Ohio 45214  
Phone 513-241-9701 Fax 513-241-6760  
cia-auction.com | info@cia-auction.com

**MTE**  
MACHINE TOOL EMPORIUM, LLC

In Conjunction With  
**Machine Tool Emporium, LLC**  
4850 Crittenden Drive, Suite D  
Louisville, Kentucky 40209  
502-802-4008  
sales@machinetoolemporium.com  
www.machinetoolemporium.com